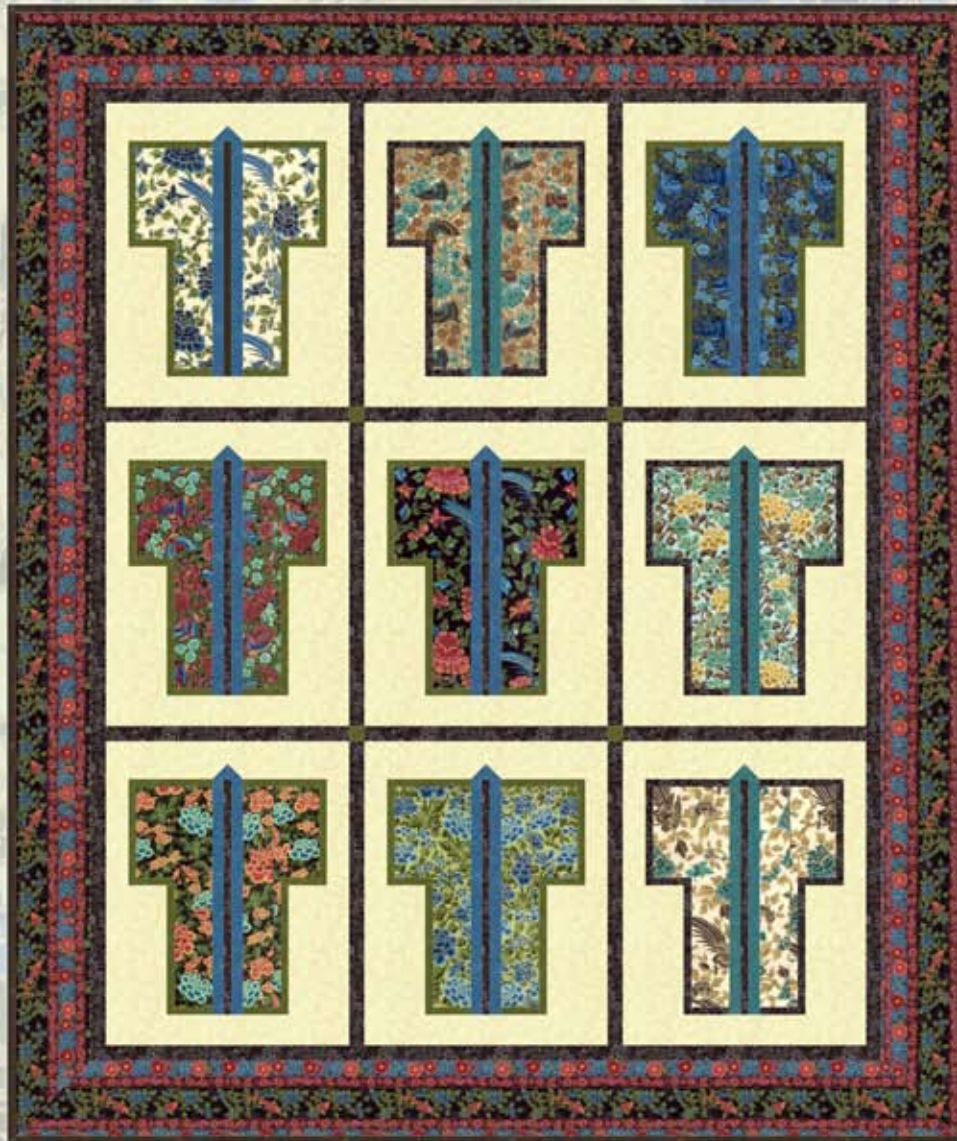


# Masami

Quilt design by Toby Lischko featuring fabrics from the  
"Masami" collection by Hoffman California Fabrics



Free pattern available from [www.HoffmanFabrics.com](http://www.HoffmanFabrics.com)  
Quilt size: 62" x 74"

**HOFFMAN FABRICS**  
CALIFORNIA-INTERNATIONAL

View us! <http://hoffmanfabrics.com/>  
Like us! [www.facebook.com/HoffmanCaliforniaFabrics](http://www.facebook.com/HoffmanCaliforniaFabrics)  
Follow us! <https://twitter.com/#!/HoffmanFabrics>  
Pin us! <http://pinterest.com/hoffmanfabrics/>

# "Masami" by Hoffman California Fabrics

## Quilt Design by Toby Lischko

### Yardage Chart

Style	
K7192 Blue Gold 7G	3/8 yards
K7194 Papyrus Gold 531G	3/8 yard
K7194 Blue Gold 7G	3/8 yard
K7192 Nightshade Gold 533G	3/8 yard
K7193 Nightshade Gold 533G	3/8 yard
K7192 Papyrus Gold 531G	3/8 yard
K7196 Black Gold 4G*	1 1/2 yards
K7194 Nightshade Gold 533G	3/8 yard

Style	
K7193 Papyrus Gold 531G	3/8 yard
K7193 Blue Gold 7G	3/8 yard
K7195 Nightshade Gold 533G	2 3/8 yards
G8555 Seafoam Gold #79G	1/4 yard
G8555 Dusty Blue Gold #D7G	1/2 yard
G8555 Ivory Gold #22G	1 7/8 yards
G8555 Olive Gold #96G	1/2 yard

\*Includes Binding



K7192  
Nightshade Gold #533G



K7192  
Papyrus Gold #531G



K7192  
Blue Gold #7G



K7193  
Nightshade Gold #533G



K7193  
Blue Gold #7G



K7193  
Papyrus Gold #531G



K7194  
Papyrus Gold #531G



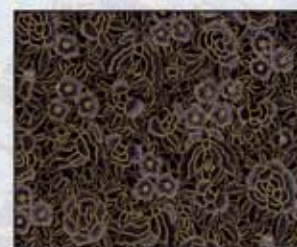
K7194  
Blue Gold #7G



K7194  
Nightshade Gold #533G



K7195  
Nightshade Gold #533G



K7196  
Black Gold #4G

### Blenders



G8555  
Seafoam Gold #79G



G8555  
Dusty Blue Gold #D7G



G8555  
Olive Gold #96G



G8555  
Ivory Gold #22G

View swatches and download quilt patterns at [www.hoffmanfabrics.com](http://www.hoffmanfabrics.com)

# Masami Kimonos

Masami collection

Hoffman Fabrics

Designed by Toby Lischko  
on EQ7

Block size: 16" x 20"

Quilt size: 62" x 72"

## Fabric Requirements

1/2 yard each: **J7192-531G, J7192-7G, J7192-533G, J7193-531G, J7193-7G, J7193-533G, J7194-531G, J7194-7G, J7194-533G**

1/4 yard **G8555-79G**

3/8 yard each: **G8555-7G, G8555-96G**

1 3/8 yards **J7196-4G** (includes binding and sash)

1 7/8 yards **G8555-22G**

2-1/4 yards **J7195-533G** (border)

4-1/2 yards backing

67" x 77" batting

## GENERAL INSTRUCTIONS

\*WOF refers to width of fabric (selvage to selvage).

\*LOF refers to length of fabric (parallel to the selvage).

\*Fabrics are directional. Make sure when sewing units and sections that the fabric print faces up.

\*Each of the sections are labeled with a letter. Pay attention to the letter when piecing the sections. To keep them organized, place them in a labeled ziplock bag.

## Cutting instructions:

From each of the following:

**J7192-531G, J7192-7G, J7192-533G, J7193-531G, J7193-7G, J7193-533G, J7194-531G, J7194-7G, J7194-533G**

Cut **two** each: 3" x 15" (**H**) and 3" x 6-1/2" (**G**).

**G8555-96G**

Cut **twelve** of each: 1" x 9" (**M**), 1" x 7-1/2" (**F**), and 1" x 5-1/2" (**L**).

Cut **twenty-four**: 1" x 3" (**I**).

Cut **four**: 1-1/2" x 1-1/2" (cornerstones).

## G8555-7G

Cut **twelve** of each: 1-1/4" x 16" (**J**) and 1-1/2" x 1-1/2" (**N**).

## G8555-79G

Cut **six** of each: 1-1/4" x 16" (**J**) and 1-1/2" x 1-1/2" (**N**).

## J7196-4G

Cut **six** of each: 1" x 9" (**M**), 1" x 7-1/2" (**F**), and 1" x 5-1/2" (**L**).

Cut **twelve**: 1" x 3" (**I**).

Cut **nine**: 1" x 16" (**K**).

Cut **six**: 1-1/2" x 16-1/2" (sash).

Cut **six**: 1-1/2" x 20-1/2" (sash).

Cut **six**: 1-1/2" x WOF (border 1).

Cut **seven**: 2-1/4" x WOF (binding).

## G8555-22G

Cut **nine** of each: 2" x 16-1/2" (**A**), 2-1/2" x 16-1/2" (**E**),

Cut **thirty six**: 2-1/2" x 9" (**D**),

Cut **eighteen** of each: 1-1/2" x 8-1/2" (**B**), 2" x 7-1/2" (**C**).

## J7195-533G

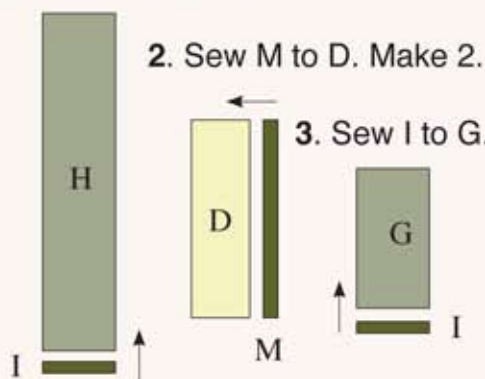
Cut **two** LOF 5-1/2" x 77"

Cut **two** LOF 5-1/2" x 65"

## General Block construction:

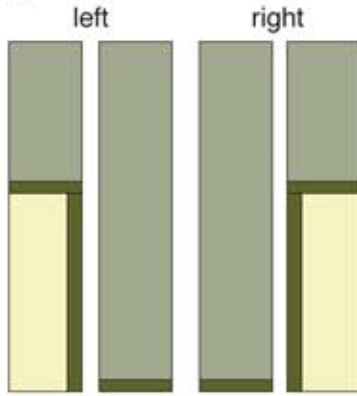
(Press in direction of the arrows.)

1. Sew I to H. Make 2.

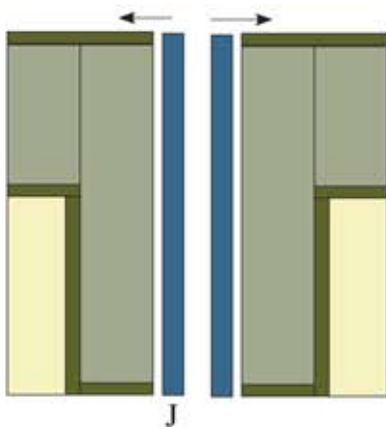


4. Sew the sections from steps 2 and 3 together as illustrated. This creates a left and right section.

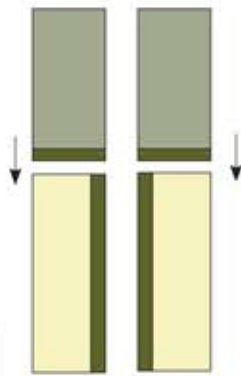
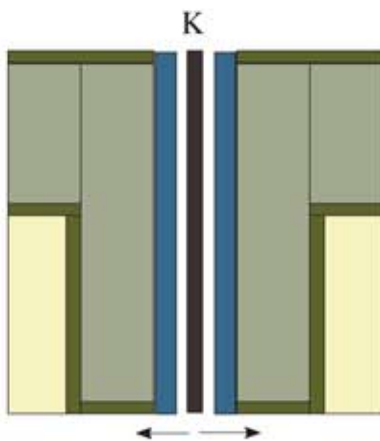
5. Sew the section from step 4 to the section from step 1.



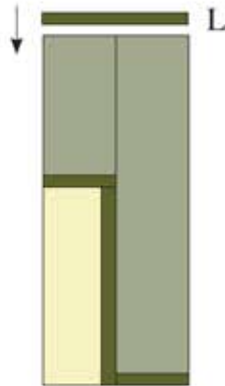
7. Sew J to the sections from step 6.



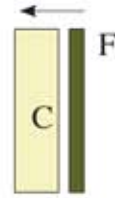
8. Sew K to the center of the two sections.



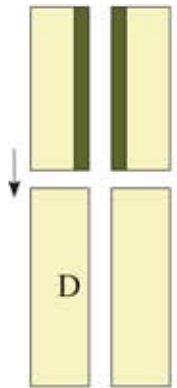
6. Sew L to the top of each section from step 5.



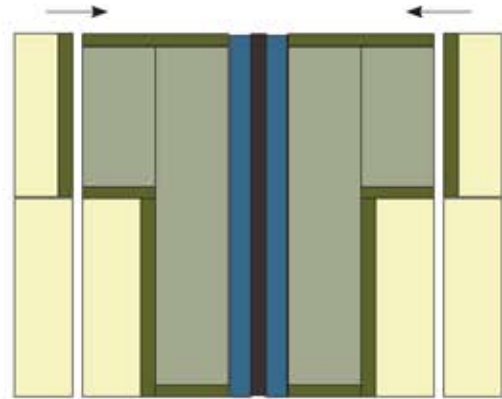
9. Sew F to C. Make 2.



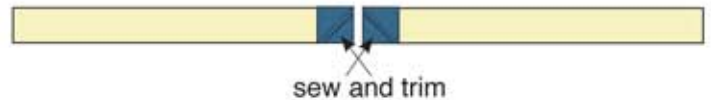
10. Sew the section from step 9 to D.



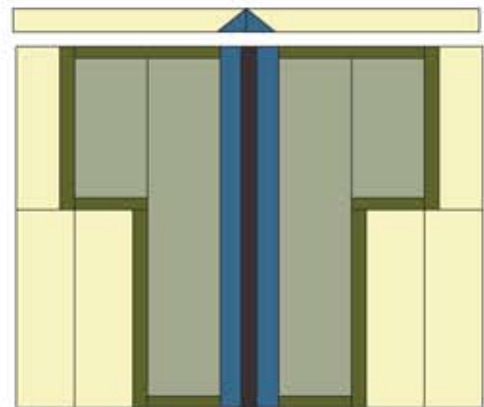
11. Sew the section from step 10 to the left and right side.



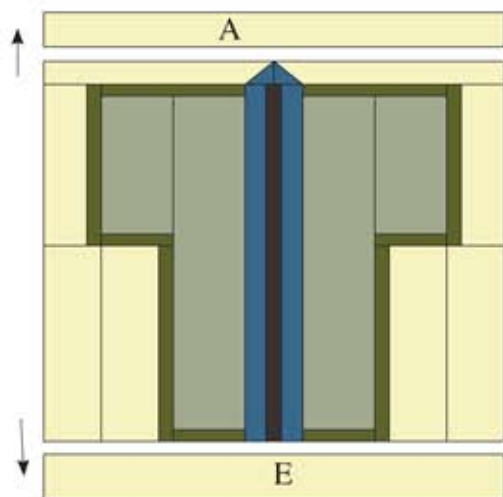
12. Draw a diagonal line on the backs of the N squares. Place right sides together on the ends of B as illustrated and sew along the drawn line. Press to triangles. Trim seams to 1/4".



13. Sew together and sew to the top of the block.



14. Sew **A** to the top and **E** to the bottom.



Create the following sets of blocks following steps 1 through 14 using the following chart.

**All blocks**

**G8555-22:** A, B, C, D, and E.

**J7196-4:** K.

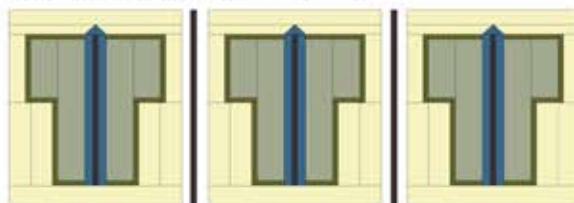
Block	F, I, M, L	G, H	J, N
1	G8555-96G Olive Gold	J7192-7G Blue Gold	G8555-7G Blue Gold
2	J7196-4G Black Gold	J7194-531G Papyrus Gold	G8555-79G Seafoam Gold
3	G8555-96G Olive Gold	J7194-7G Blue Gold	G8555-7G Blue Gold
4	G8555-96G Olive Gold	J7194-533G Nightshade Gold	G8555-7G Blue Gold
5	G8555-96G Olive Gold	J7192-533G Nightshade Gold	G8555-7G Blue Gold
6	J7196-4G Black Gold	J7193-531G Papyrus Gold	G8555-79G Seafoam Gold
7	G8555-96G Olive Gold	J7193-533G Nightshade Gold	G8555-7G Blue Gold
8	G8555-96G Olive Gold	J7193-7G Blue Gold	G8555-7G Blue Gold
9	J7196-4G Black Gold	J7192-531G Papyrus Gold	G8555-79G Seafoam Gold

*Quilt construction*

15. Sew two sash rows, alternating the 1-1/2" x 16-1/2" **J7196-4** and 1-1/2" x 1-1/2" **G8555-96G Olive Gold**. Press to sash.



16. Sew three blocks together, alternating the blocks with 1-1/2" x 20-1/2" sash strips. Press to blocks. Make **three sets**.



17. Starting and ending with a block row, sew the sash rows and block rows together.

*Border construction*

18. Sew **six** 1-1/2" **J7196-4** strips short ends together with diagonal seams. Cut into **two** 1-1/2" x 50" and **two** 1-1/2" x 68".

19. Measure the quilt top from top to bottom and side to side through the center and divide these measurements in half. Then, measuring from center out, mark the shorter length on each of the short border units and the longer length on the other units with a pin.

20. Matching centers and end pins, sew the 1-1/2" strips to the border stripe (short strip to short stripe and longer strip to longer stripe).

21. Right sides together, pin a shorter border section to the top of the quilt, matching centers and the ends of quilt top to the pins on ends of the border strip. Stitch the border to the quilt top, starting and stopping stitching 1/4" from each end. Back stitch at each end to lock stitches. Repeat with the other three borders, first the bottom then the two sides. Press seams toward the borders.

Mitering Corners

22. To miter the borders, fold one corner of the quilt on a 45° angle so that the border strips are directly on top of one another and the seams nest together. Place your rotary ruler on the fold of the quilt so that the long edge is against the fold and the 45° line is on the side seam.

**23.** Draw a line from the corner of the quilt top to the outside edge of the border. Pin the borders together.

**24.** Position your needle on the inside corner where the border meets the quilt. Stitch directly on the line you have drawn to the outside edge of the border.

**25.** Trim the excess fabric leaving a 1/4" seam allowance. Press. Repeat the process for the remaining three corners of the quilt.

**26.** Layer the quilt top, batting and backing and quilt as desired.

**27.** Stitch the **seven 2-1/4" J7196-4** binding strips together end to end using diagonal seams. Fold and press the resulting long strip in half lengthwise wrong sides together. Stitch to the quilt front, matching raw edges and mitering the corners.

**28.** Fold the binding to the quilt underside and hand-stitch the folded edge to the quilt back. Put a label on the back and ENJOY!

